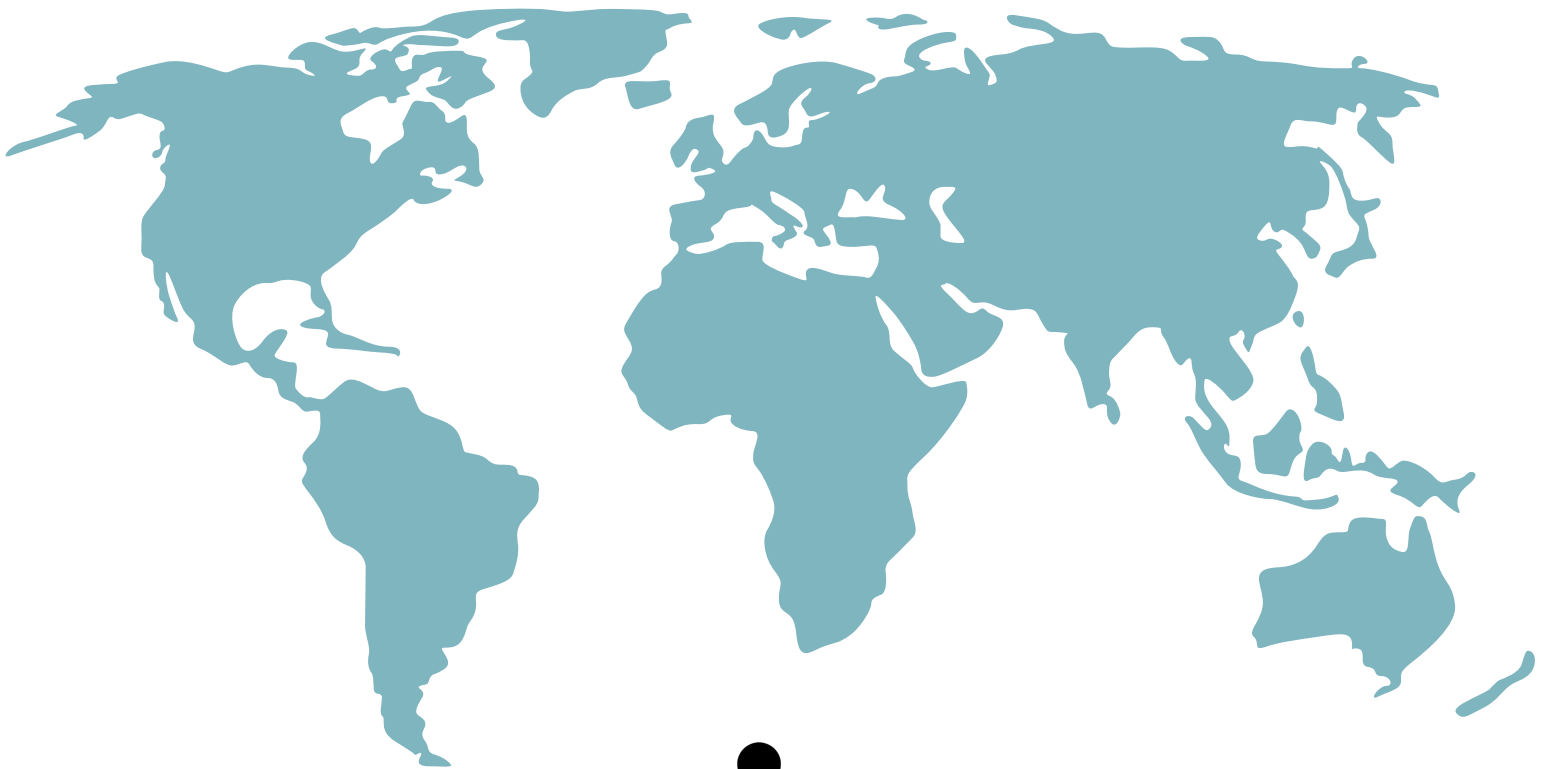


THINK GLOBAL ACT LOCAL

— HOW TO —
REDUCE, REUSE, & RECYCLE:

AN ENVIRONMENTAL LITERACY GUIDE FOR ENGLISH LANGUAGE LEARNERS



Literacy Council of Grand Island

NEBRASKA

DEPT. OF ENVIRONMENTAL QUALITY



PRINTED ON RECYCLED PAPER

—3 R'S— REDUCE, REUSE, RECYCLE

Reduce — create less waste

Did You Know: You can save 58 cents per mile by walking, biking, or carpooling instead of driving yourself

What You Can Do: Buy fewer items; buy in bulk; walk, bike, and carpool to reduce pollution

Reuse — use items again instead of throwing them away

Did You Know: You can save about \$266 dollars per year by using a stainless steel reusable water bottle instead of purchasing plastic, single-use water bottles

What You Can Do: Buy items that can be used again like reusable bags and bottles instead of single-use items; donate used items to thrift stores

Recycle — convert waste into reusable material

Did You Know: One Nebraskan only recycles 1.4 pounds of waste every day and produces 7 pounds

What You Can Do: Recycle items like plastic and paper rather than throwing away; purchase items made from recycled materials

—TALK— ABOUT THE 3 R'S

- **conserve** — to protect from overuse
- **Earth Day** — an annual event on April 22 to raise awareness about environmental issues and clean up our communities
- **environment** — the natural world; the surroundings in which you live
- **flatten** — to dismantle and make flat
- **remove** — to take something off
- **rinse** — to wash clean with water
- **sort** and **separate** — to arrange things according to type; to put similar items together



-
- What are ways you can reduce your waste?
 - What items can you reuse?
 - Do you recycle?
 - Do you know how to recycle?

—REDUCE— YOUR LITTER

Litter — trash left lying on the ground

Litter can end up in local waterways, which can lead to contamination. Litter decreases property values, costs us tourism revenue, increases expenses for repairing vehicles, and causes wildlife injuries

What You Can Do:

- properly dispose of waste in trash or recycling containers; don't throw trash on the ground
- make sure your trash container has a tight lid to prevent windblown litter
- keep a litter bag in your car to collect trash; don't throw trash out of car windows
- pick up litter that you see on the sidewalk
- leave the environment in better shape than how you found it

Other ways to reduce waste include minimizing packaging by buying in bulk, donating unwanted items to charities, holding a swap meet to exchange unwanted items, and buying at garage sales.

— CHOOSE — TO REUSE

Choosing to buy items that can be reused saves money, reduces waste, and helps sustain the environment.

Did You Know: 70% of all plastic bags and 56% of all plastic bottles produced in the U.S. end up in landfills

What You Can Do:

Use More

stainless steel water bottles

reusable grocery bags

cloth towels

silverware

reusable plastic or glass
food containers

ceramic or metal cups

Use Fewer

disposable water bottles

plastic or paper grocery bags

paper towels and napkins

plastic utensils

plastic snack bags and
takeout containers

paper and plastic cups

— WHAT & HOW — TO RECYCLE

Item	How to Prepare for Recycling
cans	rinse clean; remove paper labels
cardboard	clean; remove staples; flatten
newspaper	clean and dry; put in a paper bag or directly in recycling bin
plastic bottles	rinse clean; remove caps or lid
mixed paper, magazines	recycle; put in a paper bag
plastic bags	not accepted in recycling bins; drop them off at designated collection sites
glass	often not accepted in recycling bins; check with your local collector; reuse your glass items or use metal items instead

Look for this logo  on items — it means the item can be recycled. Keep a bin in your home to store empty and clean recyclable items. Don't keep recyclables in plastic bags! Empty the bin into your curbside recycling container before pickup or transport to a recycling facility.

— WHAT & HOW — TO COMPOST

Compost — Organic material like yard waste and food scraps you can add to soil to help plants grow

Composting is a way to reduce and recycle food and yard waste, save landfill space, and lessen the amount of toxic gases released into the environment.

What You Can Do:

- Separate yard waste (grass, leaves, tree limbs, branches, garden waste, and vines) from regular garbage
- Make sure your yard waste is free of plastic and debris
- Don't collect yard waste in plastic trash bags — it will go to the landfill. Instead, place yard waste directly into the bin or in biodegradable yard waste bags
- Drop off your yard waste for free at the Yard Waste Site in Grand Island
- Contact your curbside waste disposal company to set up a weekly yard waste pickup and to determine which types of yard waste they accept
- Purchase compost from the Yard Waste Site or your local waste disposal company to use in your yard or garden

— WRITE & DISCUSS —

Fill in the missing letters

WORDS TO USE

RECYCLE
CANS
BOTTLE
NEWSPAPER

PLASTIC
ALUMINUM
CONSERVE
LITTER

R E _ _ _ L _
P _ A _ _ _ C
_ _ U M _ N _ _
_ O N _ E R _ _

L _ T _ E _
_ _ W _ P _ _ _ R
_ _ T _ L _
C _ _ S

?

- What items can you reuse instead of throwing away?
- How can you recycle a plastic bottle?
- What are ways you can reduce your waste?
- How can you reduce your use of plastic bags?

— READ —

"PICKING UP LITTER"

Ignacio lived a few blocks away from a big city park. Once a month, Ignacio and some other people volunteered to pick up trash there. Ignacio felt good about helping to keep the park clean. After all, Ignacio really enjoyed this park. He spent many pleasurable hours there—walking, playing soccer with his friends, and relaxing.

Ignacio was disgusted by the enormous amount of litter on the ground: cigarette butts, food wrappers, cups, bottles, napkins, and newspapers. Sometimes people left larger things in the park, like empty boxes and flat tires. Once, Ignacio even found an old mattress under a tree.

There were several signs posted around the park. They warned people about a \$1,000 fine for littering. There were also plenty of garbage cans for people to use. Ignacio didn't understand why some people were so inconsiderate. Why did they want to ruin the park for everyone else?

One Saturday morning, after Ignacio had collected two big bags of trash, he sat down on a park bench. He opened a bottle of water. Then he drank it while he relaxed in the sun. After a few minutes, he stood up and, for just a moment, put his water bottle on the ground. Suddenly, a woman on a bicycle spoke.

"Please pick up your trash," she said as she rode by. "Inconsiderate people like you ruin the park for everyone else."

— ANSWER THE QUESTIONS —

How often did Ignacio and some other people volunteer to pick up trash at the park?

What did Ignacio feel good about?

What kinds of larger things did people sometimes leave in the park?

What did the signs posted around the park warn people about?

Where did he put his water bottle for just a moment? What did a woman say?

Content courtesy of:

Environmental Protection Agency. (n.d.). *Teach English, teach about the environment: A resource for teachers of adult English for speakers of other languages (ESOL)*.

Gianola, A. (2009). Picking up litter. In *Life goes on: Day-to-day stories and language activities* (pp. 88-89). Syracuse, NY: New Readers Press.

Keep America Beautiful (2010, 2015). Litter in America; Litter Research.

LaRue, C. (1998). *Reduce reuse recycle*. Coon Rapids, MN: Multi-Cultural Educational Services.

National Ocean Service. (2017). *Protecting Our Planet Starts with You..*

WORLDWIDE, 1 PERSON PRODUCES
1.6 POUNDS
OF WASTE EVERY DAY

1 AMERICAN PRODUCES
4.5 POUNDS
OF WASTE EVERY DAY

1 NEBRASKAN PRODUCES
7 POUNDS
OF WASTE EVERY DAY
& ONLY RECYCLES
1.4 POUNDS



REDUCE, REUSE, RECYCLE



HONESTLY, IT'S FOR
EVERYONE

OVER 31 MILLION TAXPAYER DOLLARS

HAVE BEEN SPENT TO CLEAN UP IMPROPERLY DISPOSED CHEMICAL WASTE IN GRAND ISLAND
ALONE; THE COSTS AND CLEANUP ARE ONGOING

— LEARN MORE AT OUR —
EARTH DAY FESTIVAL

SUNDAY, APRIL 28 | 12-4 PM | RAIN OR SHINE
RAILSIDE PLAZA & HARMONY ROOM | GRAND ISLAND, NE USA

NEBRASKA
DEPT. OF ENVIRONMENTAL QUALITY

THIS EVENT IS BROUGHT TO YOU BY THE LITERACY COUNCIL
OF GRAND ISLAND'S COMMUNITY CONNECTION CENTER,
A PROGRAM WHICH PROMOTES THE POWER OF EDUCATION
AND THE IMPORTANCE OF COMMUNITY, IN ORDER TO
CREATE A STRONGER, BETTER-CONNECTED, AND MORE PROSPEROUS WORLD.



Literacy Council of Grand Island

VOLUNTEER!

Volunteer for
cleanups in your
community



EDUCATE

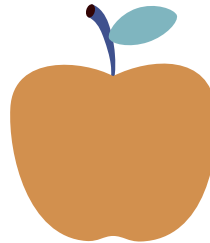
Learn about and teach
others the value of our
natural resources

PROTECTING OUR PLANET STARTS WITH Y O U



START COMPOSTING

Composting gives new life to
food and yard waste,
diverting waste from landfills



LONG-LASTING
LIGHT BULBS
— ARE A —
BRIGHT IDEA

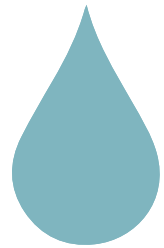


Energy efficient light
bulbs reduce greenhouse
gas emissions; also flip
the light switch off when
you leave the room

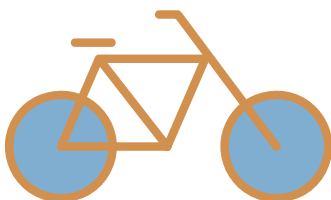


REDUCE
REUSE
RECYCLE

CONSERVE WATER

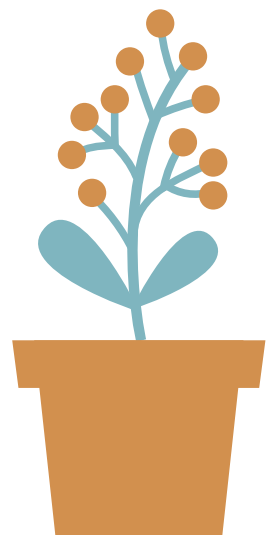


BIKE, WALK, &
CARPOOL MORE



◀ CONSUME LESS ▶

Buy less to save money,
resources, and reduce
your impact on the
environment



PLANT A GARDEN